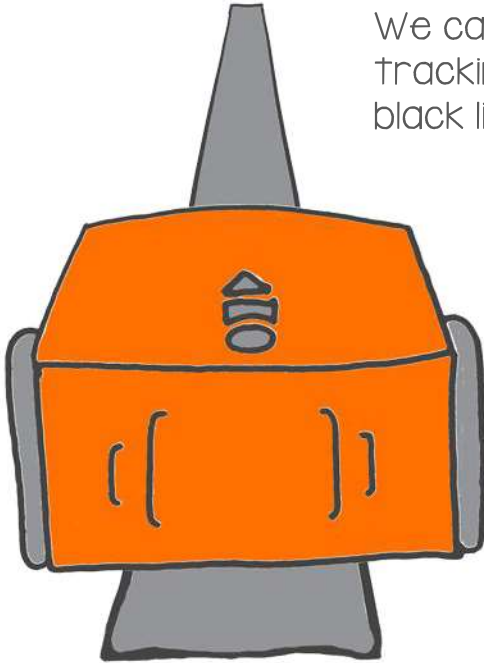


Let's follow a line

Remember Edison's tracking sensor? It is the sensor that lets Edison see the difference between dark and light surfaces.



We can make a program that uses the tracking sensor to tell Edison to drive along a black line.

What to do with EdBlocks

Go to the EdBlocks app online at www.edblocksapp.com

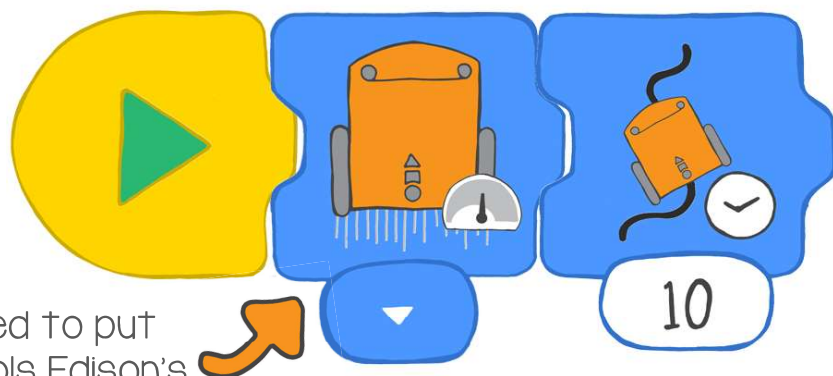
Using the EdBlocks app, arrange the blocks into the program below.



This program tells Edison to travel along a black line.

You can change the time Edison will follow the line.

You can also change the speed that Edison is driving.



This is where you need to put the block that controls Edison's speed.

You can choose slow, normal or fast.

Now, make a program with a speed control block and the follow the line block. Set the time for however long you like.

What to do with Edison

Create your own track for Edison to travel along. Use a large piece of paper and black paint, marker or tape to make a line for Edison to follow. The track line needs to be a dark colour and at least 1 cm wide.

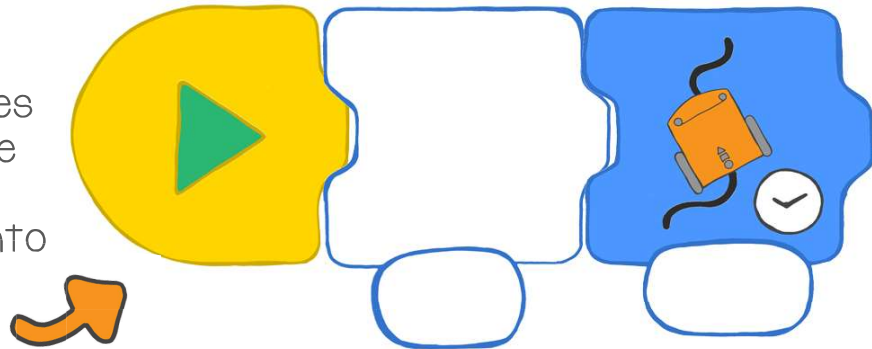
Download your program to Edison.

Put Edison on your track. Run the program by pressing the play (triangle) button.

Now try using a different speed block in your program. What changed?

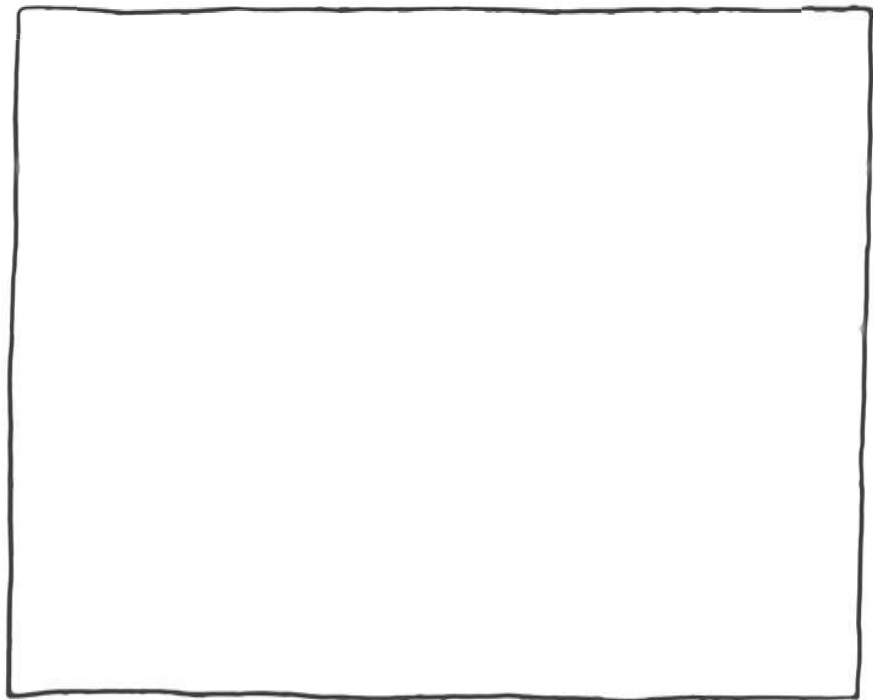
Find the answer

1. Which block makes Edison drive at the fastest speed? Draw that block into the program.



2. How long did you have Edison follow a line? Write your time into the program.

3. What did your track look like? Draw a small version in the box.



4. Think about how Edison drove on your track. Did your track give Edison enough space to run your program? How could you make your track or your program better?
